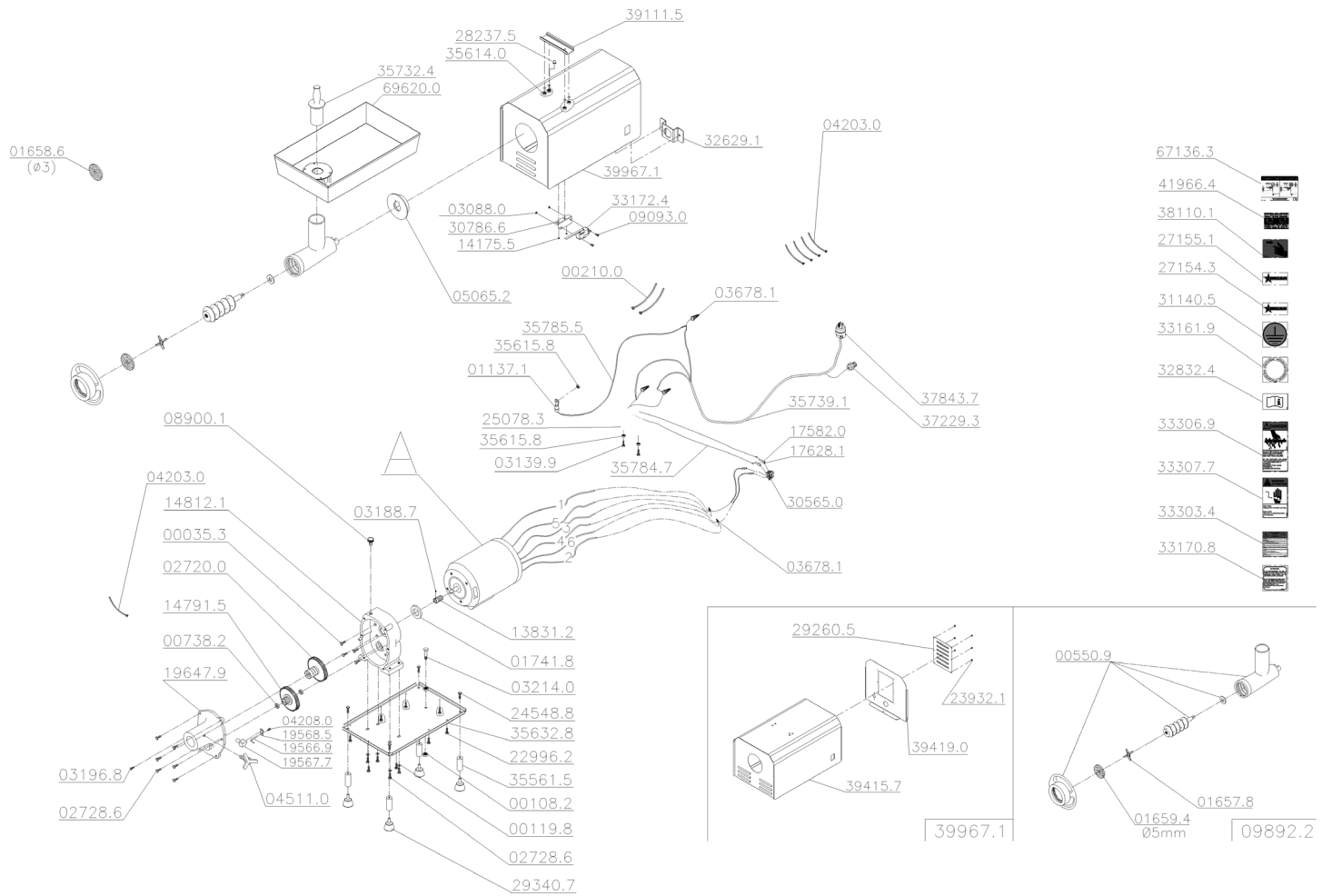


Parts Breakdown

Model MG-BR-0022 11067



Parts Breakdown

Model MG-BR-0022 11067

Item No.	Description	Position	Item No.	Description	Position	Item No.	Description	Position
38388	PFS Sex UNC1/4x1 RTZB for 11067	00035.3	38572	Complete #22 Meat Grinding Head for 11067	09892.2	AF906	Thermal Protector Label Ingles for 11067	33161.9
38531	PCA Sex UNC 3/8 ZB for 11067	00108.2	38581	Motor Gear for 11067	13831.2	AF907	Attention Ear Wire Label Ingles/Frances for 11067	33170.8
30258	Washer L 5/16 ZB for 11067	00119.8	30047	Nut M4 DIN 934 for 11067	14175.5	67041	Key 40127 A2E3Q-NA KEMA for 11067	33172.4
27688	Clamp K22 (T 50R) for 11067	00210.0	21842	Fiber Gear for 11067	14791.5	AF908	Attention Warning Label for 11067	33303.4
38548	Throat Set N°22 for 11067	00550.9	AH534	Eng. Box W/Pin (Hammed C.) for 11067	14812.1	AH538	English/French Danger Label for 11067	33306.9
21843	Ball Bearing 6001 for 11067	00738.2	30050	Terminal Cover for 11067	17582.0	AF910	Warning Label Ingl./Franc. for 11067	33307.7
AE670	Term. Eyelet for 11067	01137.1	38528	Term.Positiv Lock 2 A 4 for 11067	17628.1	AH539	PE Extensioner for 11067	35561.5
38545	Blades for Meat Grinders for 11067	01657.8	38542	Copper Tube for 11067	19566.9	AH540	PCA M6 Special ZB for 11067	35614.0
38518	Machine Plate 3" Dia for 11067	01658.6	38590	Lid Coupling Connection for 11067	19567.7	AH541	PCA M4 Special ZB for 11067	35615.8
38546	Disc 5mm N°22 for 11067	01659.4	38541	Meat Mincer Stable for 11067	19568.5	AH542	Certified Base (Gray) for 11067	35632.8
16401	Retainer Seal 00784BR1(F.0122) for 11067	01741.8	38539	Gear Box Lid (C.Martel.) for 11067	19647.9	AH543	2CV 60Hz W Engine with Thermal Protector for 11067	35706.5
21844	Worm Gear for 11067	02720.0	38593	Screw M5x6 DIN 84 Stainless Steel for 11067	22996.2	AH544	Socket NO.22 Certificate for 11067	35732.4
38534	PFS M8x25 DIN 933 ZB for 11067	02728.6	38412	PFS M4x5 DIN 7985 INOX for 11067	23932.1	AH545	CB.3x5.3mm2 SJX2M Certif. for 11067	35739.1
38393	Screw Nut M3 DIN 934 ZB for 11067	03088.0	38177	PFS M10x12 DIN 933 ZB for 11067	24548.8	AH546	Wire EL.Flex.5.3x300mm Cert. for 11067	35784.7
AH532	PFS M4x16 DIN 7985 ZB for 11067	03139.9	AH535	Cont.CWM32-00-30D13 110V 50/60Hz for 11067	25078.3	AH547	Wire EL.Flex.5.3x670mm Cert. for 11067	35785.5
27695	Allen Screw M6x8 for 11067	03188.7	27720	Omcan Logo (Machines) for 11067	27154.3	AH548	Cable Press PG21 Black6PCA W/ Red.9A14 for 11067	37229.3
38395	PFS M8x10 DIN 933 ZB for 11067	03196.8	30059	Omcan Packaging Logo for 11067	27155.1	AH549	American Plug Certif.30A 125V 4A262 for 11067	37843.7
38530	PFS Sex UNC3/8x2.3/4 RPZB for 11067	03214.0	AH536	Micro Drive Pin for 11067	28237.5	AH550	Warning Label for 11067	38110.1
27696	Nylon Cover CN 4478 for 11067	03678.1	AF901	Shutter 25x5x100 for 11067	29260.5	AH551	CS Tray Support for 11067	39111.5
27699	Cramp T 18R Small for 11067	04203.0	67037	Foot Bor.Red.C/PFS M10x30 D.50x34x30 ALT for 11067	29340.7	AH552	CS Certified Cabinet for 11067	39415.7
30038	Screw M3x6 DIN 84 ZB for 11067	04208.0	AE677	Key W / Prot.30223 M2FT2FE3V / 19 for 11067	30565.0	AH553	Certified Back Cover 1.5CV for 11067	39419.0
21578	Knob with Bar M10x30mm for 11067	04511.0	AH537	Micro Support for 11067	30786.6	AH554	Completed Cabinet Certificate for 11067	39967.1
38523	Rubber Cover for 11067	05065.2	67038	Grounded Wire Label for 11067	31140.5	AH555	Spanish/English Fragile Label for 11067	41966.4
21577	Oil Cap PSN/EE-CMSE for 11067	08900.1	AF905	Thermal Protector Protection for 11067	32629.1	AH556	Mouth Fixation Label for 11067	67136.3
AH533	PFS M3x16 DIN 7985 ZB for 11067	09093.0	67040	Instruction Manual Label for 11067	32832.4	AH557	CS Tray No.22 Cert. for 11067	69620.0